

A quick tour around the V220i

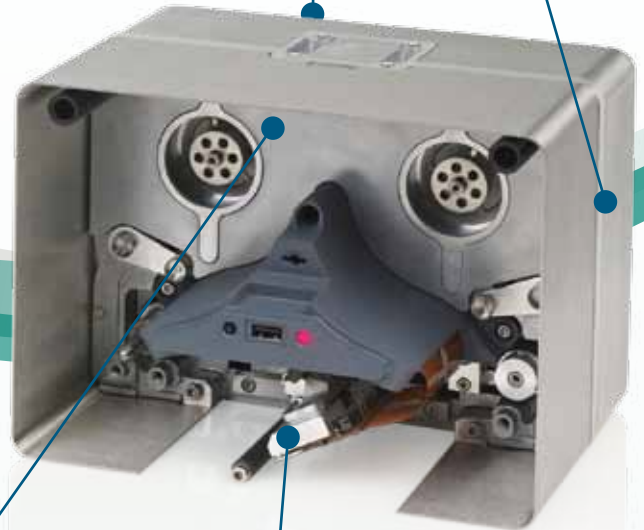
Optional handheld **TouchPad** with **QuickStep** interface can be stowed in docking station – alternatively use any PC based interface



Built-in **EasyDesign** label creation software – no extra costs

Connectivity with USB and Ethernet

650m ribbon rolls for long production runs, with effective length of up to 1625m when Economy Mode is used.



i-Tech Ribbon Drive reduces ribbon use by up to 60%

Continuous and Intermittent Mode functionality in the same printer – suitable for all applications

Proven 'Dancing Arm' technology ensures no ribbon break-related downtime

Two print head width options (32mm and 53mm) offer a range of print areas at 300dpi

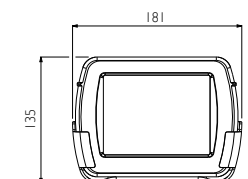
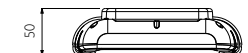
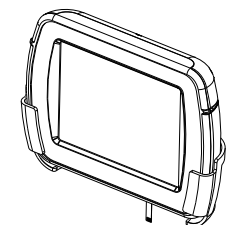
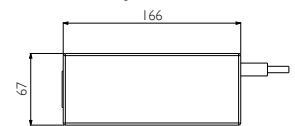
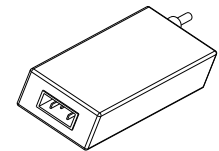
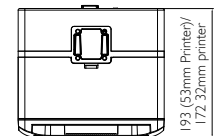
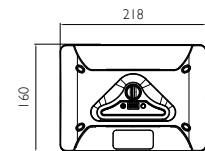
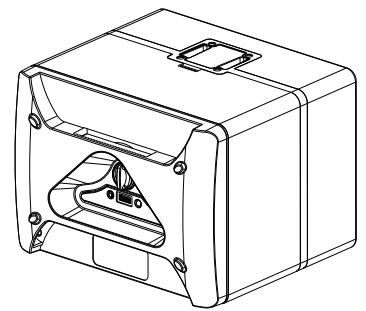
Our next generation of primary coders deploy our unique *intelligent Technology* system, **i-Tech**. Our aim was to make production lines lower maintenance, lower cost and more efficient. **i-Tech** has helped us to achieve that aim.

Domino. Do more.

Technical Specification:

	V220i (32mm)	V220i (53mm)
Printer Specification		
Printing Modes	Intermittent and Continuous in the same printer	
Left hand / Right hand	Both options available (convertable with no extra parts in 15 minutes)	
Print resolution	300 dpi	
Maximum print area (IM)	32 mm x 55 mm	53 mm x 55 mm
Maximum print area (CM)	32 mm x 500 mm	53 mm x 500 mm
Print speed (max) (IM)	400 mm/s*	
Speed range (CM)	10 mm/s – 750 mm/s*	
Print repeat rate (max)	6 prints / s (with a 10mm long print)*	
Ribbon drive technology	i-Tech Ribbon Drive with unique Dancing Arm tension control	
Max ribbon length	650 M (up to 1625 M effective length with Economy Mode)	
Standard Ribbon widths	34 mm, 22 mm	55 mm, 34 mm
Ribbon save modes*		
Economy Mode	Variable in 1% increments up to 60%	
Retraction Mode	Less than 1 mm gap between prints	
Column Mode	Yes	
Stop mid print	Yes	
Print features		
Date code format	Yes	
Offsets	Yes	
Shift codes	Yes	
Serial number generation	Yes	
Fonts	Most true type fonts	
Dynamic bar codes	Yes	
2D codes	Yes	
Database linking	Yes	
Logos / bitmaps	Yes	
Graphical User Interface	QuickStep , full colour Interface Intuitive navigation via, large, easy to read buttons and icons. WYSIWYG print preview. Multilanguage support	
Controller options	No dedicated controller required. Hardware Interface options: <ul style="list-style-type: none"> • Domino TouchPad (via hot swappable USB cable) • Shared TouchPad (via Ethernet cable or network) • PC based interface (via Ethernet cable or network) 	
Connectivity	Ethernet / USB x 2 / mini USB (service)	
Inputs	Print Go, Encoder	
Outputs	Error, Ready, Ribbon Low, Spare (software configurable volt free contacts)	
Special features	Master slave, macros, password, fastmode	
Label creation	Onboard and via EasyDesign (included)	
Electrical requirements	90v – 264v AC 50/60Hz, OR 24v DC (+/- 2%) at 5A (if direct)	
Dimensions	(W) 218mm x (H) 160mm x (D) 172mm	(W) 218mm x (H) 160mm x (D) 193mm
Weight	6.9kg	7.5kg
TouchPad Specification		
Type	5.7 inch, full colour touchscreen (640x480 resolution). Handheld with docking station included.	
Connectivity	USB, Ethernet, Mini USB (for power / data connection to printer)	
Dimensions	(W) 173mm x (H) 128mm x (D) 34mm excluding docking station, (W) 181mm x (H) 135mm x (D) 50mm including docking station	
Weight	0.4kg	
PSU Specification		
Dimensions	W 67 mm x H 34 mm x D 166 mm	
Weight	0.4 Kg	
Environmental requirements	Temperature: 5°C to 40°C. Humidity: 20-80%, non condensing	

*Note: Capability is dependent upon application and substrate type as well as message length





The V220i thermal transfer printer

The simple move to performance *and* value



For flexible films and labels, the **V220i** delivers the coding performance you expect, without the costs. Its compact size allows simple retrofit into existing brackets.

Domino. Do more.

The smart solution to thermal transfer coding

The **V220i** prints high resolution codes, text and images onto flexible foils, films and labels.

Unlike other thermal transfer coders, the **V220i** uses *intelligent Technology* to meet all your general purpose coding needs while keeping your costs as low as possible.

The **i-Tech** Ribbon Drive uses up to 60% less ribbon per print and virtually eliminates downtime related to ribbon break due to its unique dancing arm tension control. Ribbon change is also quick and infrequent thanks to cassette loading of larger than standard ribbon rolls.

Being small and compact, the **V220i** will fit into most existing thermal transfer brackets, so you can quickly upgrade your existing equipment with minimal installation cost.



A diverse range of applications

Domino's **V220i** printers are ideal for goods packed using VFFS and HFFS machines and labellers across a wide range of food and healthcare applications:



Change ingredient listings or similar to customise a generic packaging film for many uses



Reliable printing in cold environments and excellent code adhesion – even after freezing



Clear, high resolution codes every time



Print variable text, logos and 2D codes over larger areas onto papers, films and labels



Greener credentials

Domino's commitment and investment in sound environmental practices means we frequently exceed the demanding governmental, industry and company standards and regulations. We are committed to minimising the consumption of natural resources and energy and the creation of waste. Additionally, our products are RoHS and WEEE compliant so that they are recyclable.

V220i

Innovative design has enabled a 40% reduction in weight (compared to previous models), helping to minimise environmental impact. Moreover, by enabling you to use up to 60% less ribbon and no compressed air, the Domino V220i also helps you to reduce your carbon footprint.

Performance to match your application

Configurable

Intermittent or Continuous Mode is offered in the same unit, which can quickly convert between Left and Right handing to be ready to fit all applications.

You do not need a dedicated controller – use any PC based interface with the V220i, including a host packaging machine interface, to meet the needs of your application.



Ribbons

Full range of Domino approved ribbons that comply with latest legislative and environmental standards.

Versatile

The V220i can print from low to high speeds (10-750mm/sec). The integrated print head heater ensures consistent code quality, even at low operating temperatures.



Capable

At 300 dpi, the V220i supports text, logos, dynamic bar codes and 2D codes with ease. It can also link seamlessly with a database to download specific information for each print. Two print head width options (32mm and 53mm) offer a range of print areas.



Lowest running costs – thanks to the **i-Tech** Ribbon Drive



Optimum changeover speed offered through cassette ribbon loading and fast recalibration.

Efficient

Domino's **i-Tech** Ribbon Drive offers 4 ribbon save settings including 'Economy Mode' which allows you to use up to 60% less ribbon per print – without affecting print quality. As well as reducing ribbon costs this increases the effective ribbon roll length, significantly reducing costs associated with ribbon changeovers.



Reliable

Downtime caused by ribbon breaks is virtually eliminated by **i-Tech's** unique Dancing Arms, which constantly maintain ribbon tension. Additionally, the system does not need compressed air; further improving reliability and reducing running costs.

Quick and easy to install



Compact

The V220i is compact, allowing it to fit simply into most existing thermal transfer brackets with use of a simple adapter:

A small power supply, few cable connections and the opportunity to control many printers from one interface also contribute to significantly reducing the time, cost and complexity of installation.



Smart

AutoAlign, our unique (patent pending) head control technology, simplifies installation. At the touch of a button, the print head automatically aligns to the optimum position: no need for shims or tools, and, by controlling the print head electronically, there is no need for compressed air.

Easy to use



QuickStep is our simplified operator user interface for effortless control and status reporting. No complex menus or parameters, just enter the job and you are ready to print.

Quick and easy job changes without mistakes with WYSIWYG message selection.



You can create code formats on the line with built-in label creation. Alternatively, you can design them on a PC using **EasyDesign** or other compatible label creation packages, and transfer via USB or Ethernet.

Domino. Do more.